

Panasonic

TelQuest
International

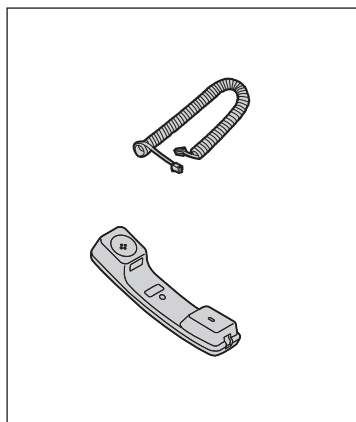
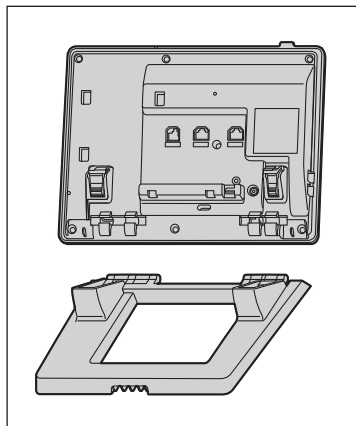
TelQuest International

973-808-4588

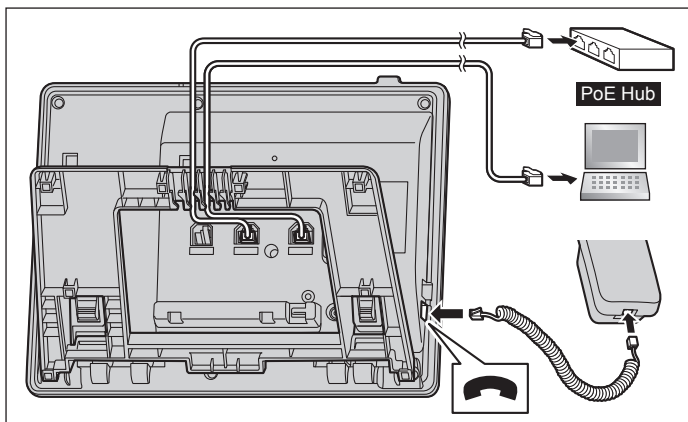
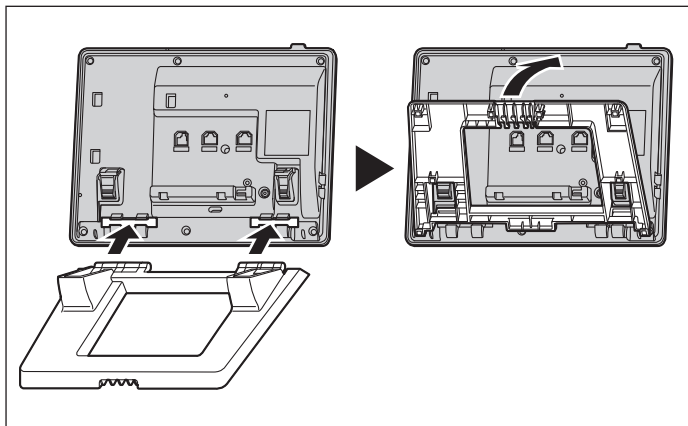
Quick Start Guide

SIP Phone

Model No. **KX-HDV230**



i)



Copyright Notice and License Information

This product incorporates the following software:

- (1) software developed independently by or for Panasonic Corporation,
- (2) software owned by a third party and licensed to Panasonic Corporation,
- (3) software licensed under the GNU General Public License, Version 2.0 (GPL V2.0),
- (4) software licensed under the GNU LESSER General Public License, Version 2.1 (LGPL V2.1), and/or
- (5) open source software other than the software licensed under the GPL V2.0 and/or LGPL V2.1.

The software categorized as (3) - (5) are distributed in the hope that it will be useful, but WITHOUT ANY WARRANTY, without even the implied warranty of MERCHANTABILITY or FITNESS FOR A PARTICULAR PURPOSE. Please refer to the detailed terms and conditions thereof shown in our website below.

At least three (3) years from delivery of this product, Panasonic Corporation will give to any third party who contacts us at the contact information provided below, for a charge no more than the cost of physically performing source code distribution, a complete, machine-readable copy of the corresponding source code covered under GPL V2.0, LGPL V2.1 or other licenses with the obligation to do so, as well as the respective copyright notice thereof.

<https://panasonic.net/cns/pcc/support/sipphone/>

Quick Start Guide

SIP Phone

Model No. **KX-HDV230**

Thank you for purchasing this Panasonic product.
Please read this Quick Start Guide carefully before using this product and save this Quick Start Guide for future use.

Outline

This manual describes setup and safety information of the unit.

Related Documentation

- **Operating Instructions**
Describes information about the installation and operation of the KX-HDV230.
- **Administrator Guide**
Describes information about the programming and maintenance of the KX-HDV230.

These documentations are provided on the Panasonic Web site at:
<https://panasonic.net/cns/pcc/support/sipphone/>

Note

- In this manual, the suffix of each model number is omitted unless necessary.

Setup

Before setting up the equipment following the procedures below, refer to pages i)–ii).

We recommend configuring these settings with your administrator.

You can configure the settings through the Web user interface by entering the IP address of the KX-HDV230 in the Web browser. For details, consult your administrator.

For Your Safety

To reduce the risk of injury, loss of life, electric shock, fire, malfunction, and damage to equipment or property, always observe the following safety precautions.

Explanation of symbols

The following symbols are used to classify and describe the level of hazard and injury caused when the denotation is disregarded and improper use is performed.



Denotes a potential hazard that could result in serious injury or death.



Denotes a hazard that could result in minor injury or damage to the product or other equipment.

The following symbols are used to classify and describe the type of instructions to be observed.



This symbol is used to alert users to a specific operating procedure that must not be performed.



This symbol is used to alert users to a specific operating procedure that must be followed in order to operate the product safely.



- For safety reasons, do not physically modify the product or any optional equipment.
- To reduce the risk of fire, electric shock or damage to the product, do not disassemble or modify this product. Only qualified service personnel should install or service this product. Opening or removing covers may expose you to dangerous voltages or other risks. Incorrect reassembly can cause electric shock.
- Do not insert objects of any kind into this product through openings, as they may touch dangerous voltage points or short out parts that could result in a risk of fire or electric shock. Never spill liquid of any kind on or in the product.
- Do not connect or disconnect the power plug with wet hands.

For Your Safety

- Do not touch the product, AC adaptor, AC adaptor cord, power cord or Ethernet cable during a lightning storm.
- When installing or testing a product with an external AC adaptor, the AC adaptor should be plugged into a wall outlet or floor-mounted AC outlet. Do not connect the AC adaptor to a ceiling-mounted AC outlet, as the weight of the AC adaptor may cause it to become disconnected.
- Do not make power connections that exceed the ratings for the AC outlet or power equipment. If the power rating of a surge protector, etc. is exceeded, it can cause a fire due to heat buildup.
- Do not touch the AC adaptor for extended periods of time. Doing so can lead to low-degree burns.
- To prevent possible fire or electric shock, do not expose this product to rain or moisture.
- Do not install or mount the product in any other way than described in relevant manuals.
- Do not allow anything to rest on the AC adaptor cord, power cord or Ethernet cable. Do not locate the product where the AC adaptor cord, power cord or Ethernet cable may be stepped on or tripped on.
- Do not stretch or bend the cables. Also, do not allow anything to rest on the cables.
- Do not place the product on an unstable surface, as a fall may cause serious internal damage.
- Do not bundle up the AC adaptor cord. The cord may become damaged, which can lead to a fire, electric shock, or electric short.
- Care should be taken so that objects do not fall onto, and liquids are not spilled into, the product. Do not subject this product to excessive smoke, dust, moisture, mechanical vibration, shock, or direct sunlight.
- Do not place heavy objects on top of this product.



- Follow all warnings and instructions marked on this product.
- Unplug the AC adaptor from the AC outlet and contact your phone system dealer/service provider in the following cases. If the power is supplied from the network to the product (Power-over-Ethernet), disconnect the Ethernet cables.
 - A. When the power cord or power plug is damaged or frayed.
 - B. If liquid has been spilled into the product.
 - C. If the product has been exposed to rain or water.
 - D. If the product does not operate according to the manuals. Adjust only the controls that are explained in the manuals. Improper adjustment of other controls may result in damage and may require service by qualified service personnel to restore the product to normal operation.
 - E. If the product has been dropped or damaged.
 - F. If product performance deteriorates.

- G. If the product emits smoke, an abnormal smell or makes an unusual noise. These conditions can cause fire or electric shock.
- H. If water has been splashed on the AC adaptor, the AC adaptor cord or the power cord, or if they are wet. Doing so can result in fire, electric shock, or injury.
- I. If damage to the product exposes any internal parts.
- The use of excessive sound volume through earphones, headphones, or headsets may cause hearing loss.
- Switch off the device when in the proximity of areas with potentially explosive atmospheres such as fuel/chemical storage facilities or blasting operations.
- The handset hook poses a choking hazard. Keep the handset hook out of reach of children.
- This handset earpiece is magnetized and may retain small ferrous objects.
- Completely insert the power plug into the AC outlet. Failure to do so may cause electric shock and/or excessive heat resulting in a fire.
- The AC adaptor should only be connected to the type of electric power supply specified on the product label. If you are not sure of the type of power supply to your home, contact your phone system dealer/service provider.
- Use a specified Panasonic AC adaptor.
AC adaptor information is indicated in the manual on the Panasonic Web site at: <https://panasonic.net/cns/pcc/support/sipphone/>
- Make sure that the wall that the product (approx. 1500 g [52.9 oz]) will be attached to is strong enough to support the product. If not, it is necessary for the wall to be reinforced.
- Only use the specified wall-mounting equipment.
- It is advisable to unplug the product during thunderstorms as the warranty does not cover any damage resulting from lightning strikes and power surges. Lightning protection is advised.
- Allow 10 cm (3 15/16 in) clearance around the product for proper ventilation.
- When this unit is no longer in use, make sure to detach it from the wall.



CAUTION



- The product and the cables should never be placed near or over a radiator or other heat source.
- The product should not be placed outdoors (use indoors).
- The product should not be placed near high-voltage equipment.
- Do not use a microwave oven to dry this product.
- Do not use the AC adaptor if it has been submerged in water.

For Your Safety

- Do not bundle cables that are connected to the product with the power cords of machines located nearby.



- The AC adaptor is used as the main disconnect device. Ensure that the AC adaptor is located near the product and is easily accessible.
- When left unused for a long period of time, disconnect the product from the AC outlet and detach it from the wall. When the product receives power from a PoE power supply, disconnect the Ethernet cable.
- Wipe the product with a soft cloth. Do not clean the product with abrasive powders or with chemical agents such as benzine or thinner.
- Clean the power plug periodically with a soft, dry cloth to remove dust and other debris.
- The product may not operate in the event of a power failure.
- When the product is mounted on a wall, make sure the cables are securely fastened to the wall.
- When driving the screws into the wall, be careful to avoid touching any metal laths, wire laths or metal plates in the wall.
- Use cables that are fire-resistant or fireproof.
- Cords used to connect devices to the EHS jack or headset jack must be less than 3 m (9.8 ft) in length.

Important Safety Instructions

When using your product, basic safety precautions should always be followed to reduce the risk of fire, electric shock and injury to persons, including the following:

- Do not use this product near water for example, near a bathtub, washbowl, kitchen sink or laundry tub, in a wet basement or near a swimming pool.
- Avoid using a product during an electrical storm. There may be a remote risk of electric shock from lightning.
- Do not use the product to report a gas leak in the vicinity of the leak.

SAVE THESE INSTRUCTIONS

Notes

Notes

